

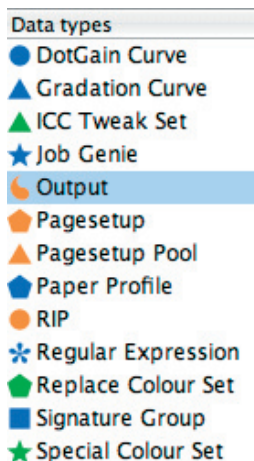


Serendipity Blackmagic

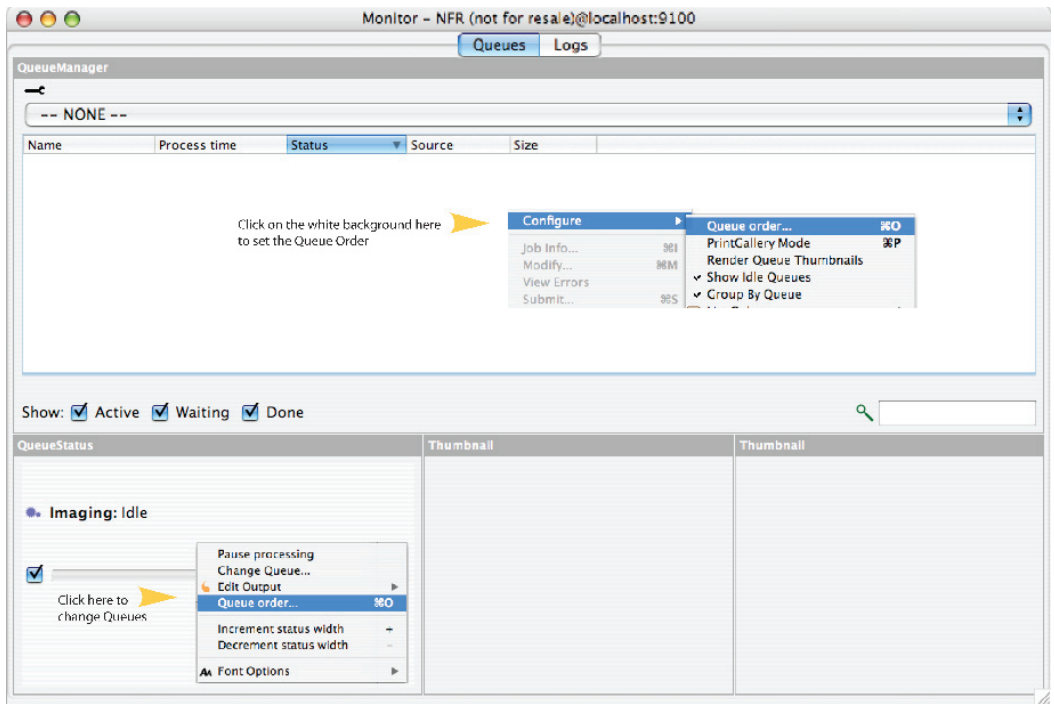
Quick Start User Guide

It is assumed that the software is already loaded and the dongle connected. For installation of the software please see the Installation section of the manual.


- Start the server by double clicking on the server icon. 
- Once the server has completely started, double click the client icon to launch the Serendipity Client. 
- Select Menu > Application > System Settings > Colour Settings (under the Server tab).
- Click the “Change System Specials” button, select Reference-Lab (or your own specials) and click OK.
- Click OK to dismiss the System Settings window and apply the changes.
- Choose Menu > Application > Workbench.
- Select Output from the list of configurable items (data types) on the left.
- Select Menu > File > New and enter a new name for the output e.g.. Printer name.
- Choose the correct printer driver from the list.
- Select the destination of the printer i.e. how the job will be delivered to the printer. e.g. LPR.
- Enter the Hostname / IP Address and Path (if required).
- Select Menu > File > Save.

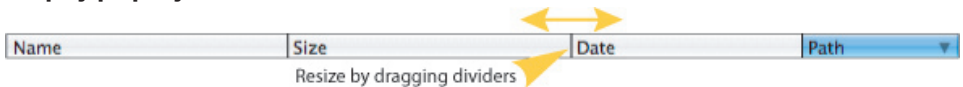


- **Select Pagesetup from the list and choose Menu > File > New**
- **Enter a name for the Pagesetup.**
- **Select the desired Print Resolution and make any necessary changes to custom settings.**
- **Go to the ICC Profiles section, click on Output > Choose ICC Profile and select the default output profile (or one of your own).**
- **Click OK**
- **Scroll to the last panel called Sheet and enter the width of the media on the left, and select Auto Rotate method on the right.**
- **Choose File > Save.**
- **Select RIP from the list on the left.**
- **Choose File > New.**
- **Click OK to dismiss the warning message and enter a name for the RIP.**
- **Choose a RIP driver from the list on the left that matches your RIP type.**
- **Click Enable Polling and enter a poll time. e.g. 2 minutes.**
- **Choose your connection method.**
- **Go to the Paths panel and click Browse.**
- **Navigate to your jobs directory and click OK.**
- **Select Test and click Save and Test when prompted.**
- **Choose Menu item Window > Monitor.**



- **Make sure that the Queues Tab is selected.**
- **In the Queue Manager (top window), right click and select Configure > Queue Order. (see fig4)**
- **Select all the items on the left list and move them to the right list.**
- **Select Spool and Autodetect from the right list and then drag them to the top of the list.**
- **Click OK.**
- **In the Queue Status window (bottom left window), right click and select > Queue Order.**
- **Select Spool, Render and the Printer from the left list and drag it to the right list.**
- **Select Spool on the right list and drag it to the top of the list.**

- Click OK.
- Choose the Menu > Tabs > New Tab.
- Enter the name RIPs and click OK.
- Select Menu > Layout > Add RIP Monitor.
- Select Menu > Layout > Edit.
- Resize the RIP Monitor by dragging the bottom right of the window.
- Select Menu > Layout > Use.
- Select the RIPs Tab at the top of the monitor and drag it to the left so it is in between Queues and Logs.
- Click the RIPMonitor spanner icon  to show the toolbar. If there are no jobs showing click the Poll button 3 times.
- When your jobs appear resize the columns by dragging the dividers at the top so that the jobs display properly.



- Select a job and click submit.
- Choose the Pagesetup you created earlier and click OK.
- Click the Queues Tab at the top of the Monitor and watch the job as it is processed through the system.

Further information about the setup and configuration can be found in the manual that comes with the software or from the website. Once you have the system configured it is recommended that you backup the configuration with the Archiver tool and back up the monitor layout. See the relevant sections in the manual for more information.